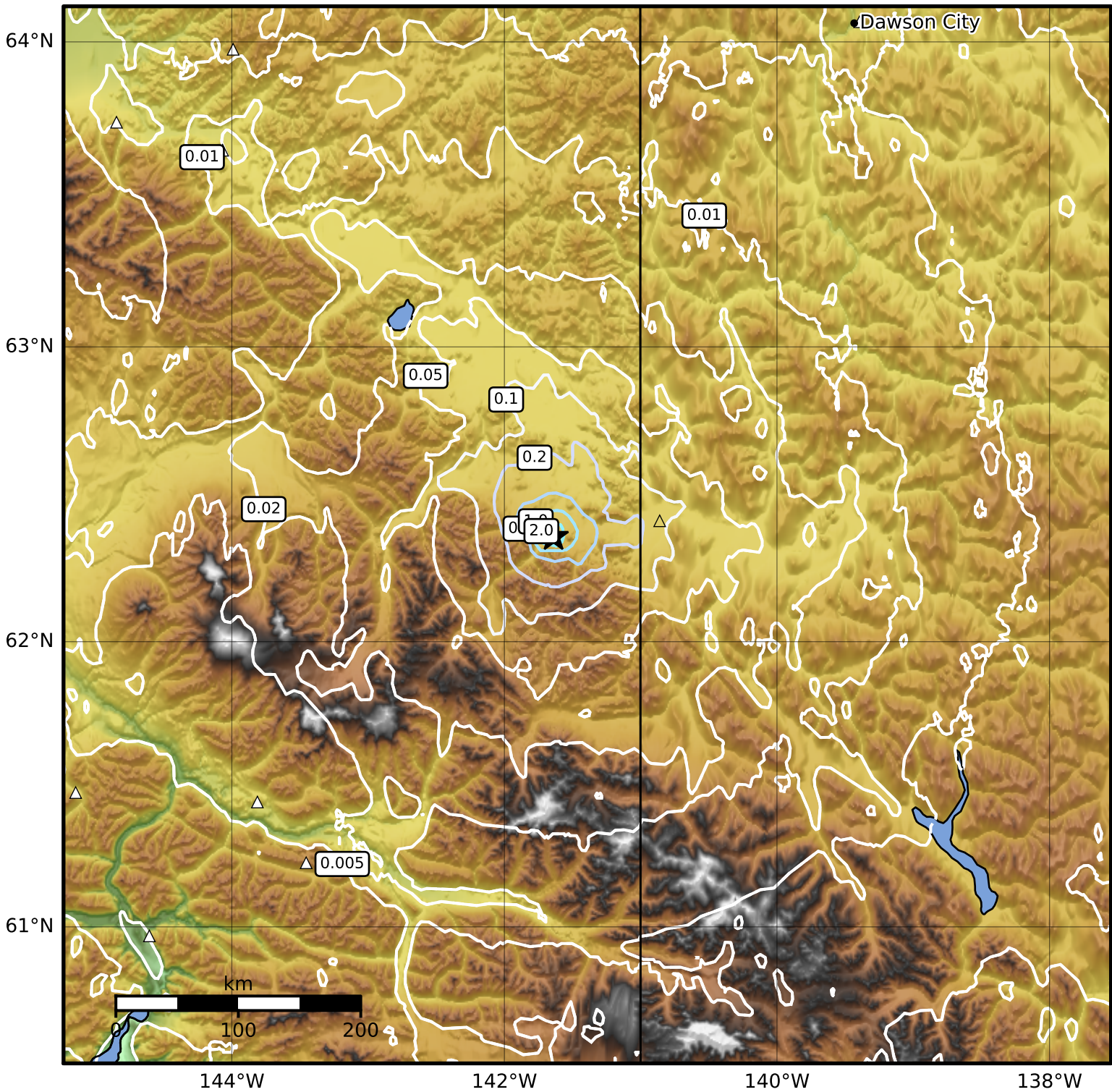


0.3 Second Peak Spectral Acceleration Map Alaska Earthquake Center
 ShakeMap: 35 km (22 miles) NE of Chisana
 Feb 08, 2024 22:09:25 UTC M3.5 N62.36 W141.64 Depth: 0.0km ID:ak0241sv41yr



SA(0.3) (%g)	0.1	0.2	0.5	1	2	5	10	20	50	100	200
---------------------	------------	------------	------------	----------	----------	----------	-----------	-----------	-----------	------------	------------

Scale based on Worden et al. (2012)

Version 1: Processed 2024-02-08T22:16:38Z

△ Seismic Instrument ○ Reported Intensity

★ Epicenter