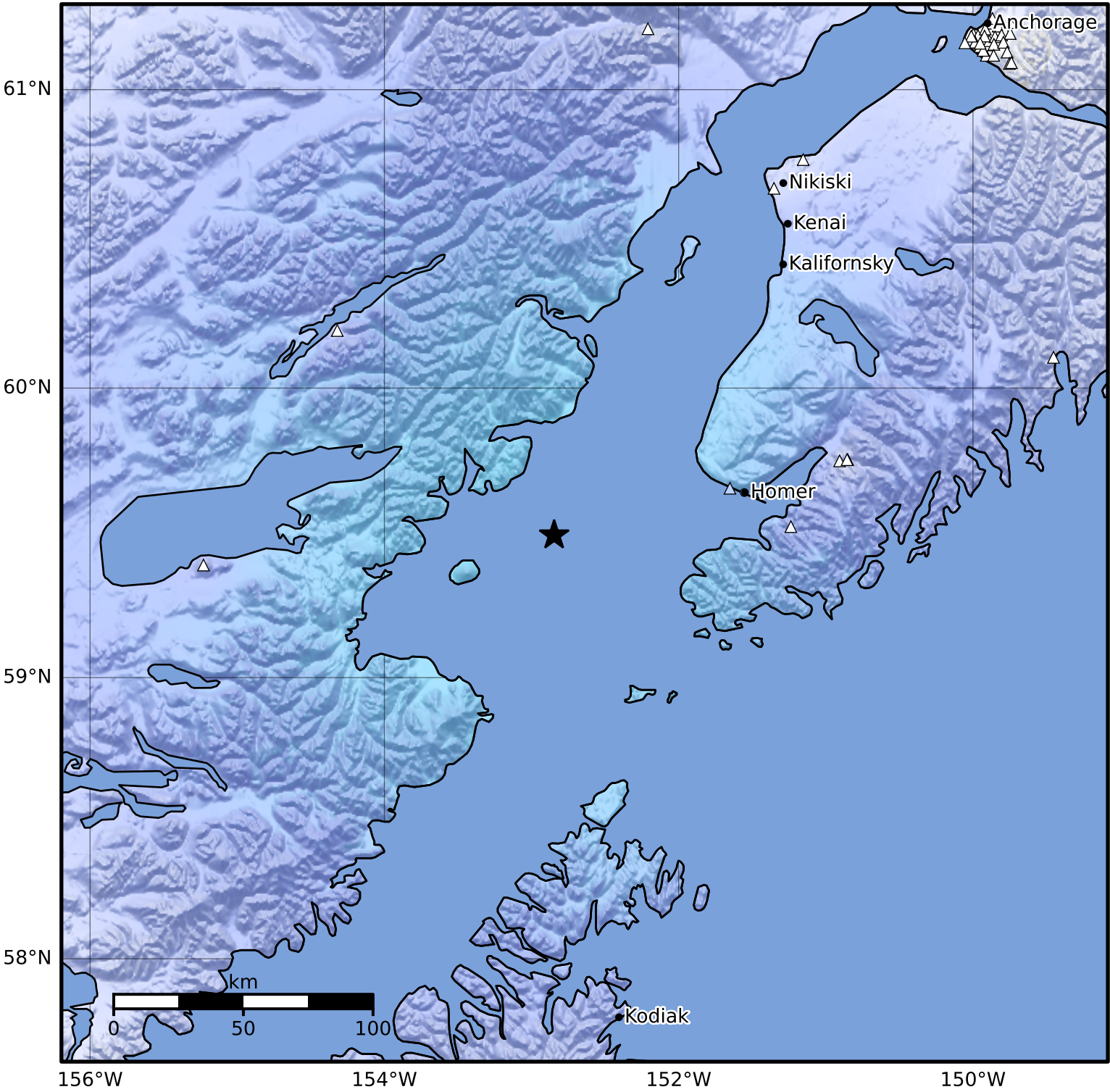


Macroseismic Intensity Map Alaska Earthquake Center  
 ShakeMap: 54 km (34 miles) WNW of Nanwalek  
 Jun 28, 2024 08:55:37 UTC M3.8 N59.50 W152.85 Depth: 93.8km ID:ak02489ttsxz



SHAKING	Not felt	Weak	Light	Moderate	Strong	Very strong	Severe	Violent	Extreme
DAMAGE	None	None	None	Very light	Light	Moderate	Moderate/heavy	Heavy	Very heavy
PGA(%g)	<0.0464	0.297	2.76	6.2	11.5	21.5	40.1	74.7	>139
PGV(cm/s)	<0.0215	0.135	1.41	4.65	9.64	20	41.4	85.8	>178
INTENSITY	<b>I</b>	<b>II-III</b>	<b>IV</b>	<b>V</b>	<b>VI</b>	<b>VII</b>	<b>VIII</b>	<b>IX</b>	<b>X+</b>

Scale based on Worden et al. (2012)

Version 1: Processed 2024-06-28T16:06:35Z

△ Seismic Instrument ○ Reported Intensity

★ Epicenter