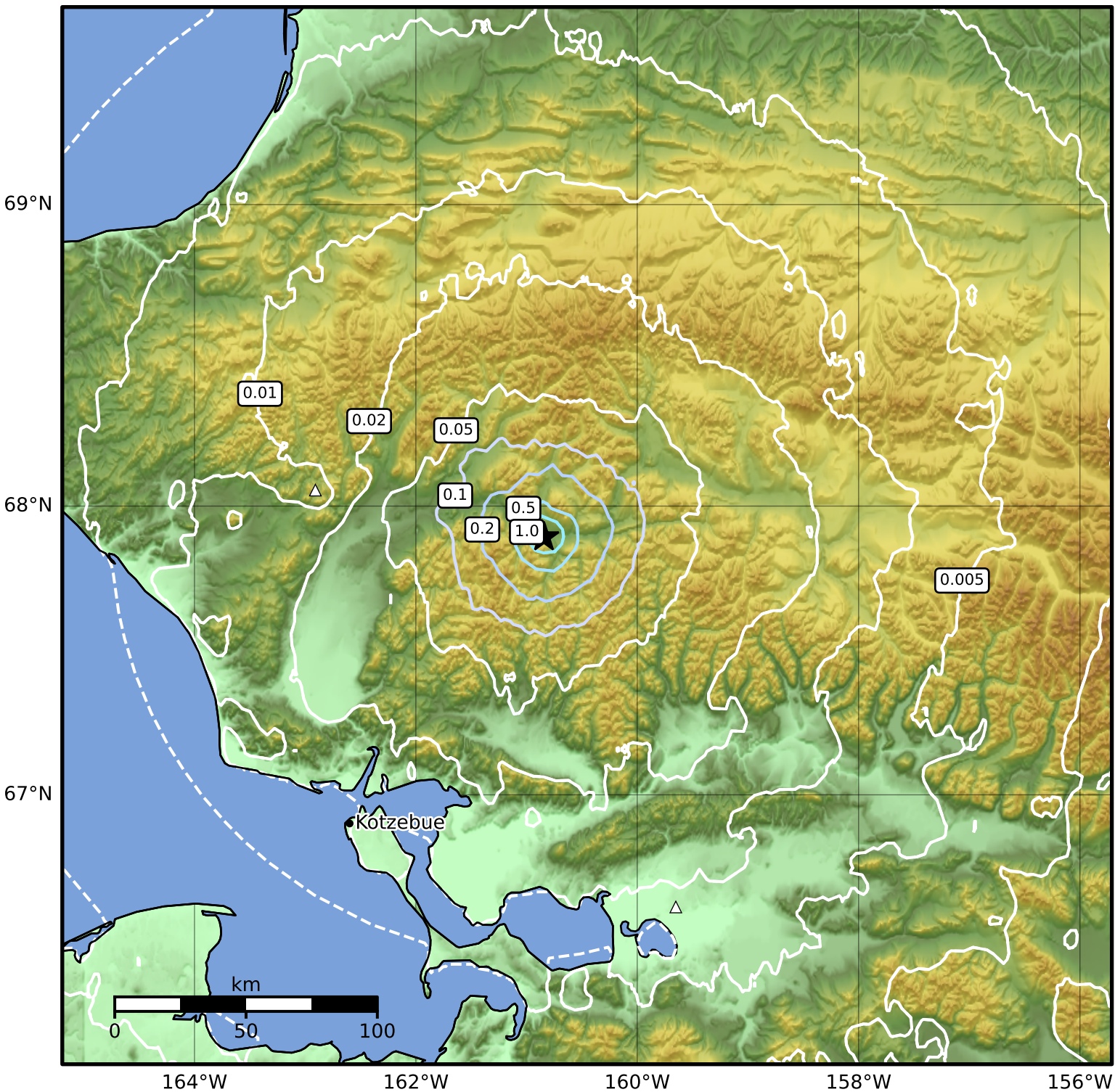


Peak Ground Acceleration Map Alaska Earthquake Center
ShakeMap: 86 km (53 miles) ESE of Red Dog Mine site
Jul 27, 2024 15:19:27 UTC M3.7 N67.89 W160.84 Depth: 5.5km ID:ak0249lwd5zr



PGA (%g)	0.1	0.2	0.5	1	2	5	10	20	50	100	200
----------	-----	-----	-----	---	---	---	----	----	----	-----	-----

Scale based on Worden et al. (2012)

Version 1: Processed 2024-07-27T15:25:36Z

△ Seismic Instrument ○ Reported Intensity

★ Epicenter