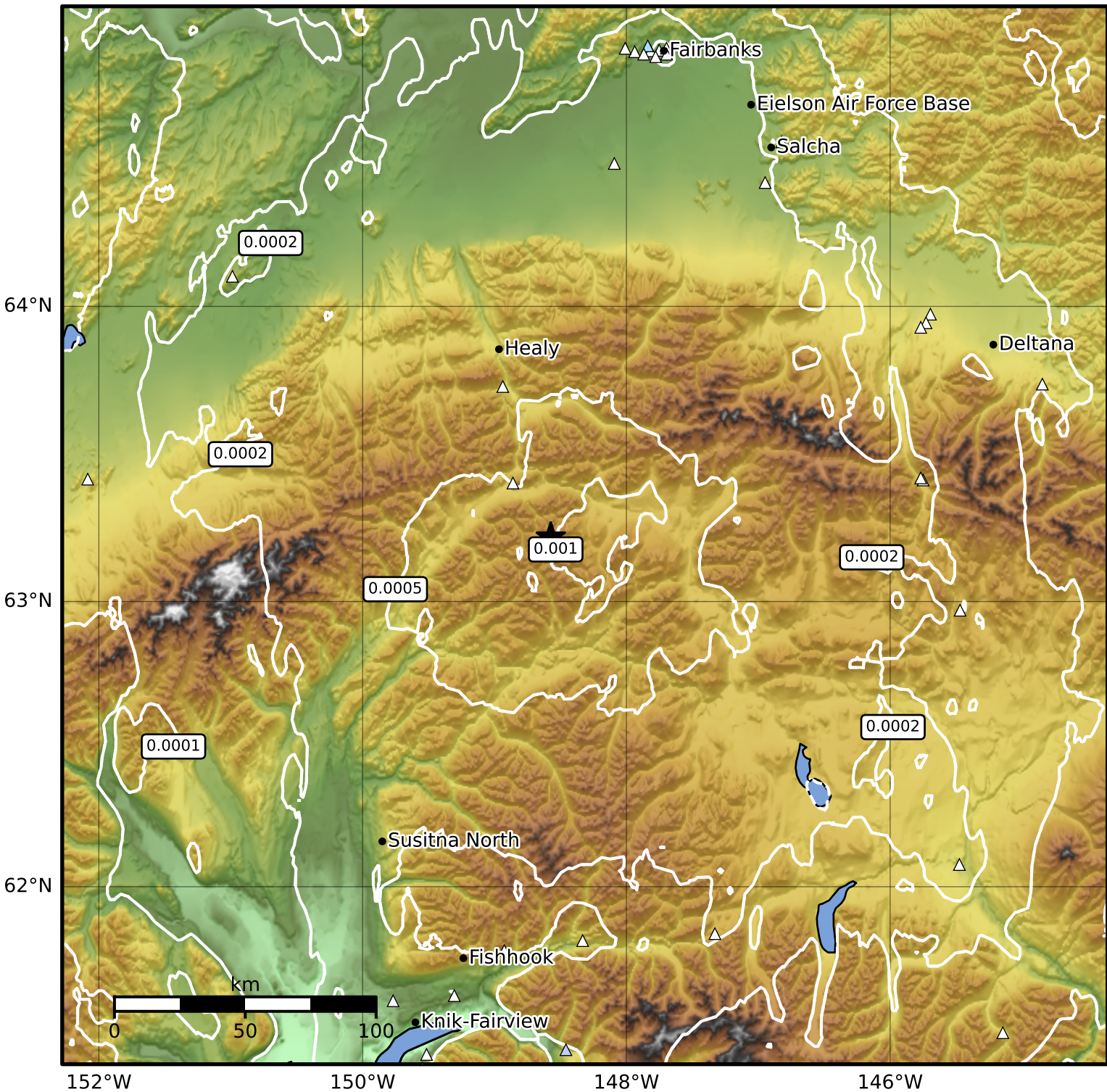


3.0 Second Peak Spectral Acceleration Map Alaska Earthquake Center
 ShakeMap: 27 km (17 miles) SE of Cantwell
 Sep 05, 2024 20:46:56 UTC M3.5 N63.22 W148.57 Depth: 43.6km ID:ak024bg502ak



Scale based on Worden et al. (2012)

Version 1: Processed 2024-09-05T20:57:13Z

△ Seismic Instrument ○ Reported Intensity

★ Epicenter