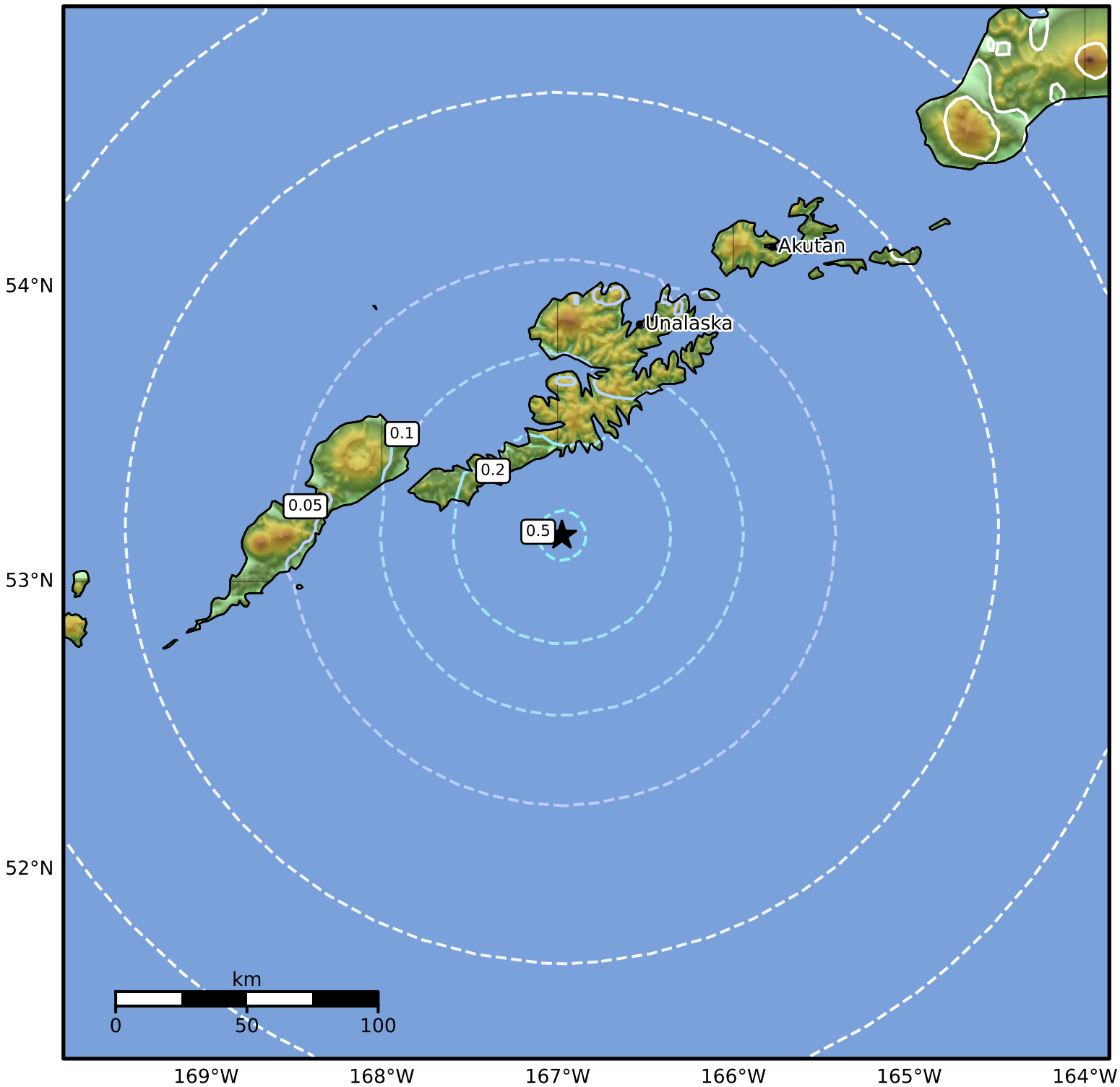


1.0 Second Peak Spectral Acceleration Map Alaska Earthquake Center  
 ShakeMap: 84 km (52 miles) SSW of Unalaska  
 Oct 06, 2024 08:34:11 UTC M4.7 N53.16 W166.98 Depth: 25.8km ID:ak024cv7fyc0



<b>SA(1.0) (%g)</b>	<b>0.1</b>	<b>0.2</b>	<b>0.5</b>	<b>1</b>	<b>2</b>	<b>5</b>	<b>10</b>	<b>20</b>	<b>50</b>	<b>100</b>	<b>200</b>
---------------------	------------	------------	------------	----------	----------	----------	-----------	-----------	-----------	------------	------------

Scale based on Worden et al. (2012)

Version 1: Processed 2024-10-11T16:37:22Z

△ Seismic Instrument ○ Reported Intensity

★ Epicenter