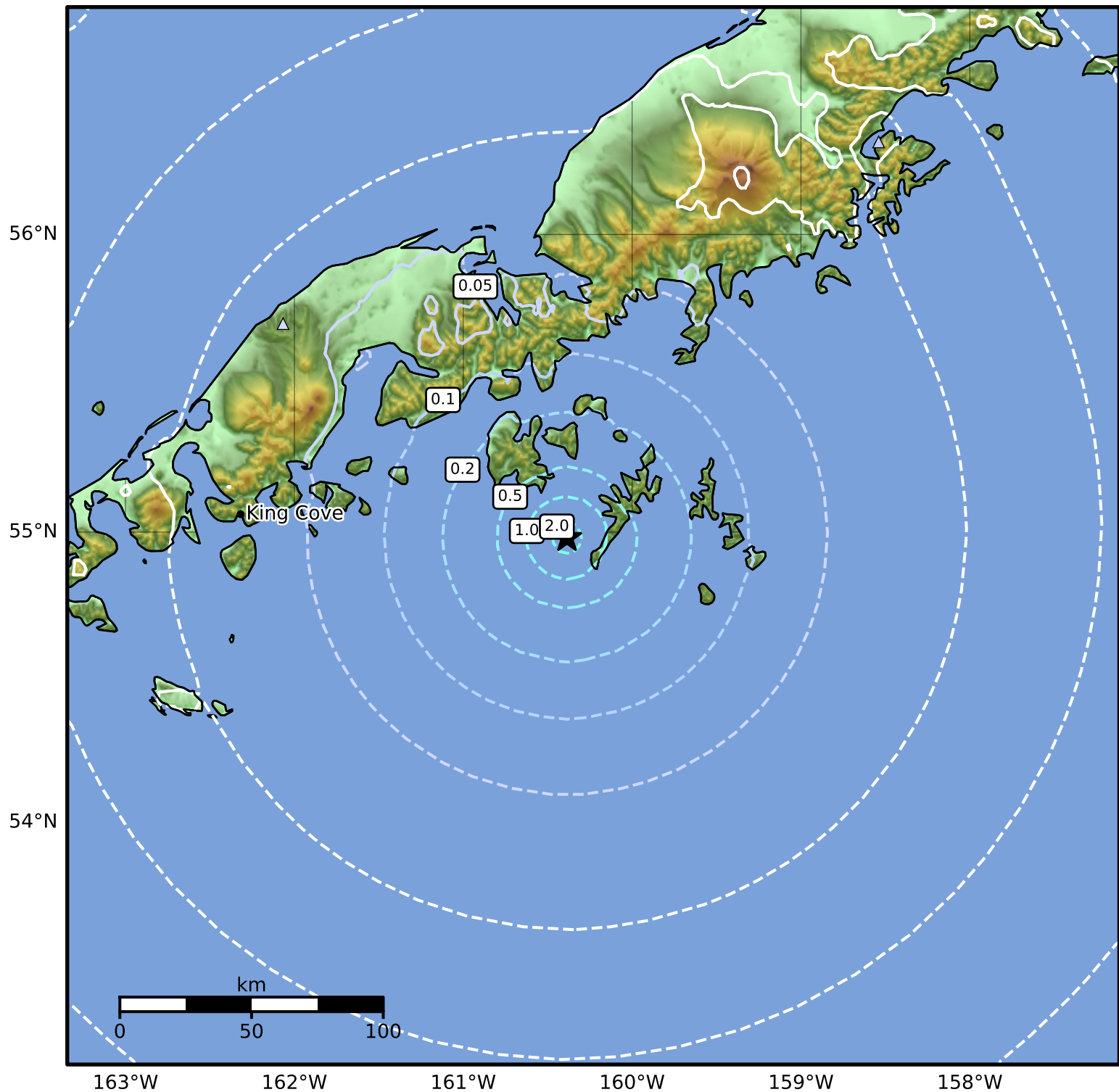


Peak Ground Velocity Map Alaska Earthquake Center  
ShakeMap: 40 km (25 miles) S of Sand Point  
Oct 10, 2024 04:51:31 UTC M4.6 N54.98 W160.39 Depth: 10.0km ID:ak024d1rbarf



PGV (cm/s)	0.1	0.2	0.5	1	2	5	10	20	50	100	200
------------	-----	-----	-----	---	---	---	----	----	----	-----	-----

Scale based on Worden et al. (2012)

Version 2: Processed 2024-10-10T14:27:33Z

△ Seismic Instrument ○ Reported Intensity

★ Epicenter