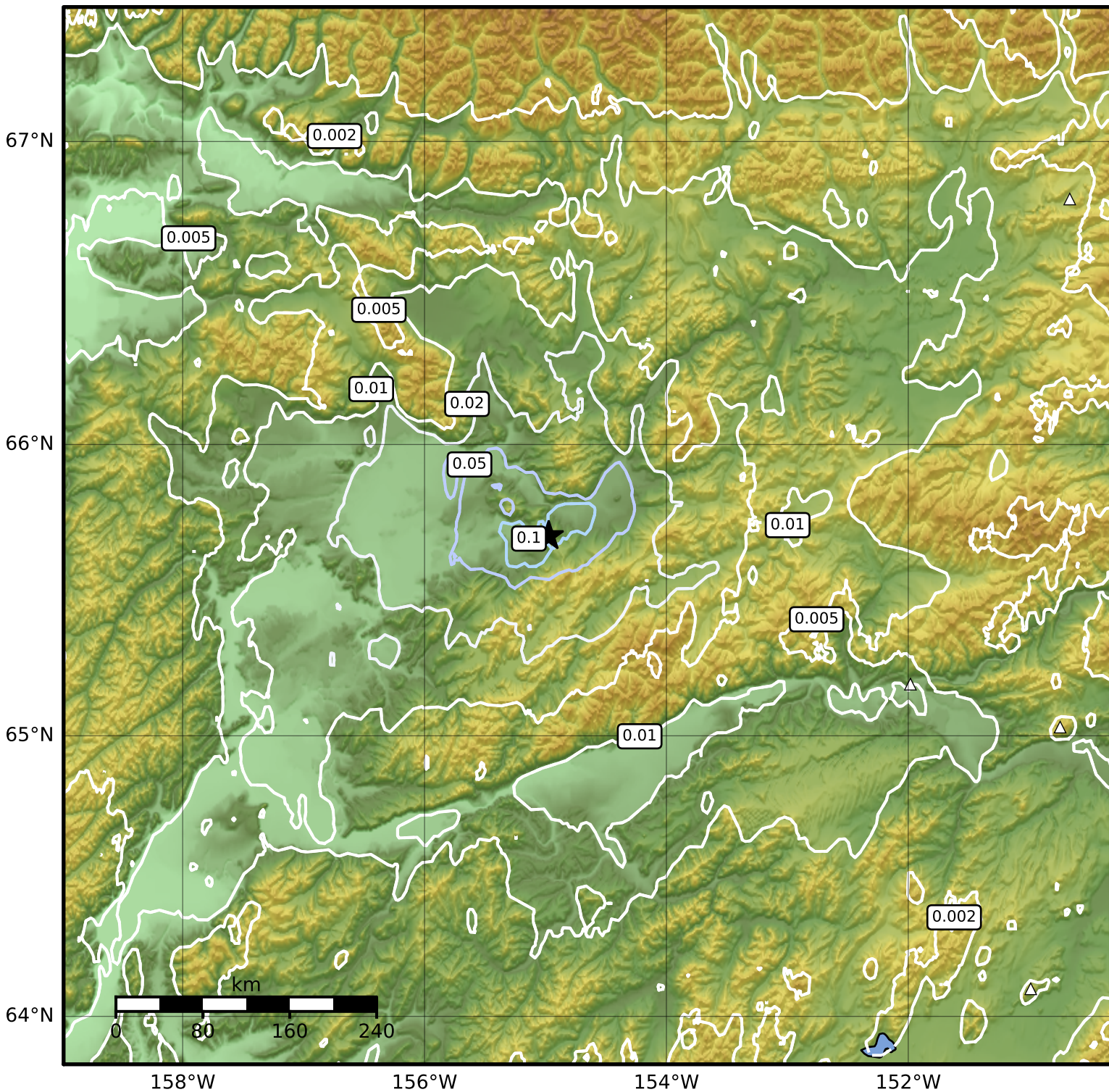


1.0 Second Peak Spectral Acceleration Map Alaska Earthquake Center  
ShakeMap: 51 km (32 miles) SW of Hughes  
Jan 09, 2024 06:55:37 UTC M3.8 N65.69 W154.97 Depth: 20.5km ID:ak024ezql9j



SA(1.0) (%g)	0.1	0.2	0.5	1	2	5	10	20	50	100	200
--------------	-----	-----	-----	---	---	---	----	----	----	-----	-----

Scale based on Worden et al. (2012)

△ Seismic Instrument ○ Reported Intensity

★ Epicenter

Version 2: Processed 2024-01-09T07:12:41Z