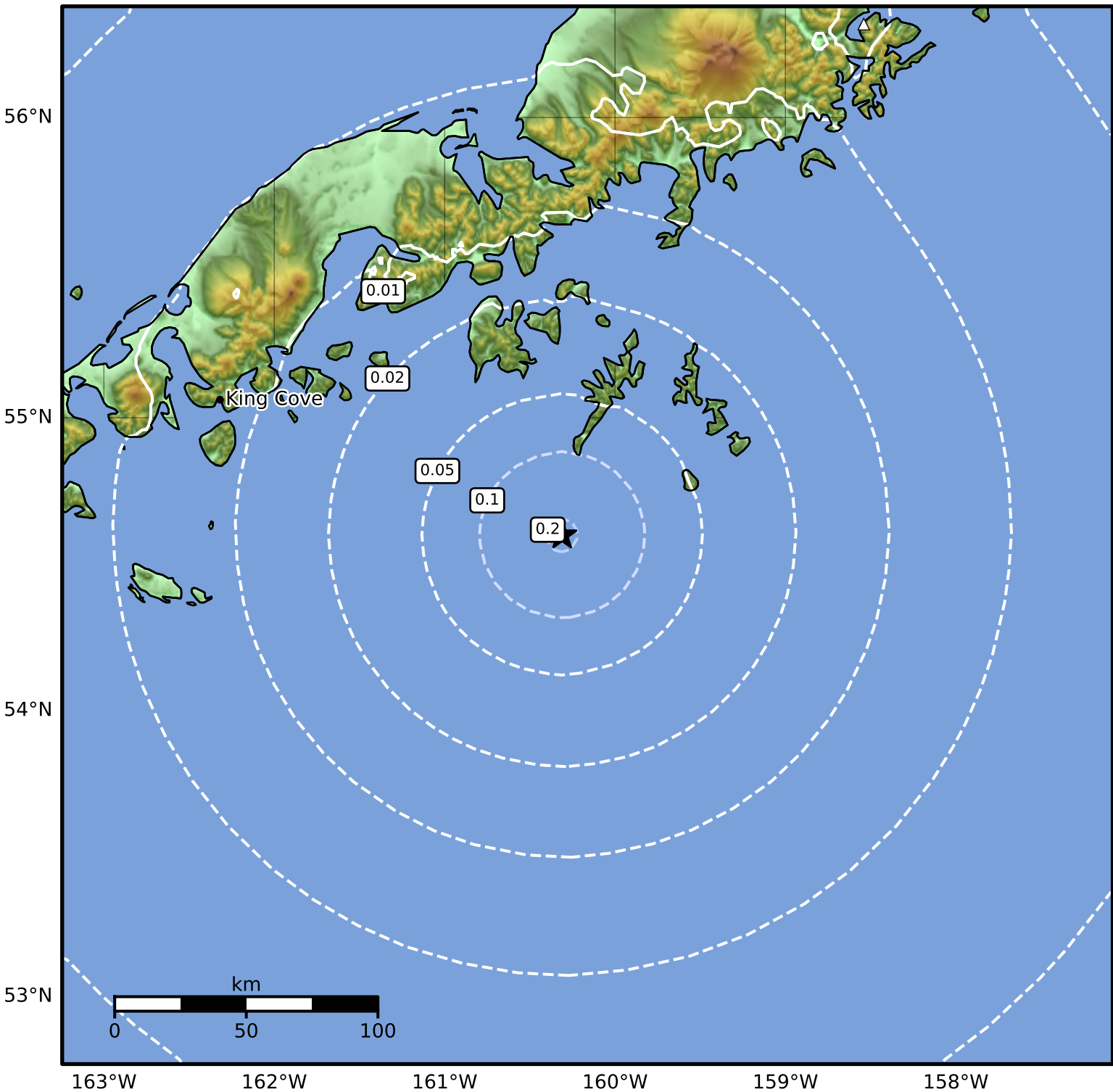


Peak Ground Acceleration Map Alaska Earthquake Center
ShakeMap: 83 km (52 miles) S of Sand Point
Nov 27, 2024 20:55:49 UTC M3.6 N54.60 W160.31 Depth: 30.7km ID:ak024f9ensij



PGA (%g)	0.1	0.2	0.5	1	2	5	10	20	50	100	200
----------	-----	-----	-----	---	---	---	----	----	----	-----	-----

Scale based on Worden et al. (2012)

Version 2: Processed 2024-11-28T01:31:28Z

△ Seismic Instrument ○ Reported Intensity

★ Epicenter