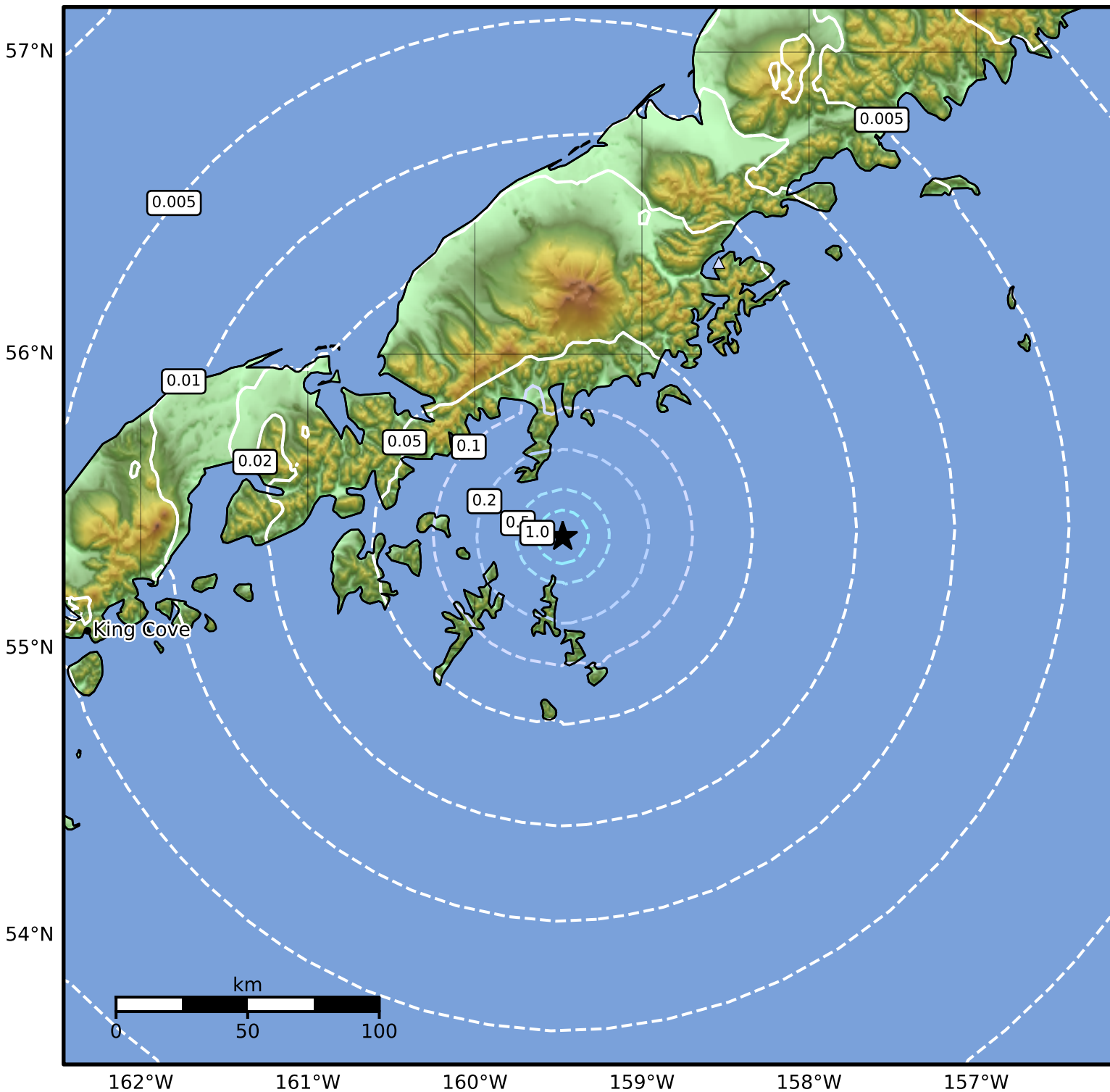


Peak Ground Acceleration Map Alaska Earthquake Center
 ShakeMap: 62 km (39 miles) SSW of Perryville
 Dec 13, 2024 18:24:32 UTC M3.7 N55.38 W159.47 Depth: 8.0km ID:ak024fztvshi



PGA (%g)	0.1	0.2	0.5	1	2	5	10	20	50	100	200
----------	-----	-----	-----	---	---	---	----	----	----	-----	-----

Scale based on Worden et al. (2012)

Version 2: Processed 2024-12-14T02:14:51Z

△ Seismic Instrument ○ Reported Intensity

★ Epicenter