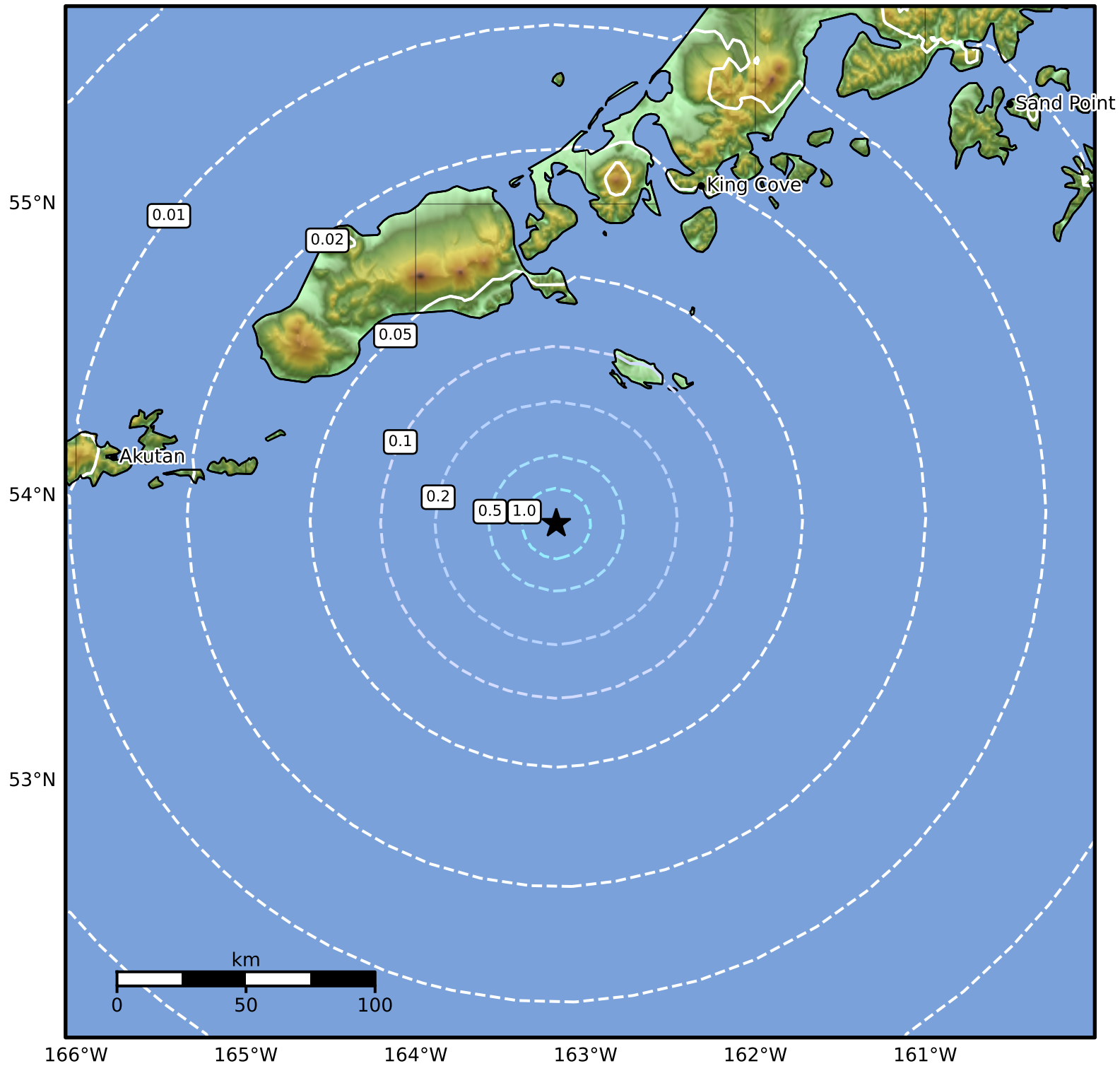


Peak Ground Acceleration Map Alaska Earthquake Center
 ShakeMap: 106 km (66 miles) S of False Pass
 Jan 29, 2025 16:19:03 UTC M4.2 N53.90 W163.17 Depth: 16.1km ID:ak0251c882z7



PGA (%g)	0.1	0.2	0.5	1	2	5	10	20	50	100	200
-----------------	------------	------------	------------	----------	----------	----------	-----------	-----------	-----------	------------	------------

Scale based on Worden et al. (2012)

Version 2: Processed 2025-01-29T17:57:00Z

△ Seismic Instrument ○ Reported Intensity

★ Epicenter