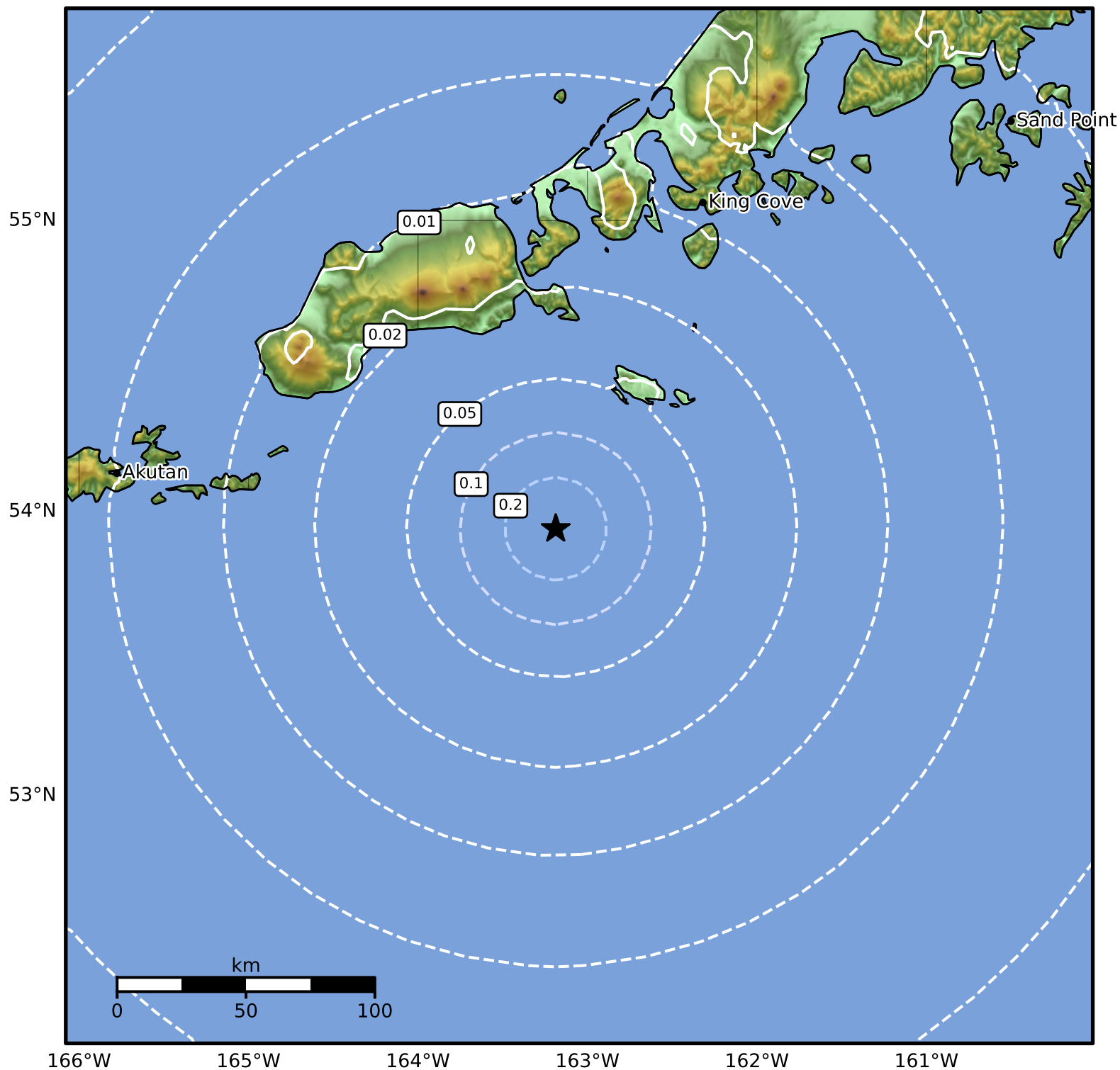


Peak Ground Acceleration Map Alaska Earthquake Center
ShakeMap: 102 km (63 miles) S of False Pass
Jun 10, 2025 09:29:37 UTC M3.7 N53.94 W163.19 Depth: 25.7km ID:ak0257ef22lk



PGA (%g)	0.1	0.2	0.5	1	2	5	10	20	50	100	200
----------	-----	-----	-----	---	---	---	----	----	----	-----	-----

Scale based on Worden et al. (2012)

Version 1: Processed 2025-06-10T15:36:37Z

△ Seismic Instrument ○ Reported Intensity

★ Epicenter