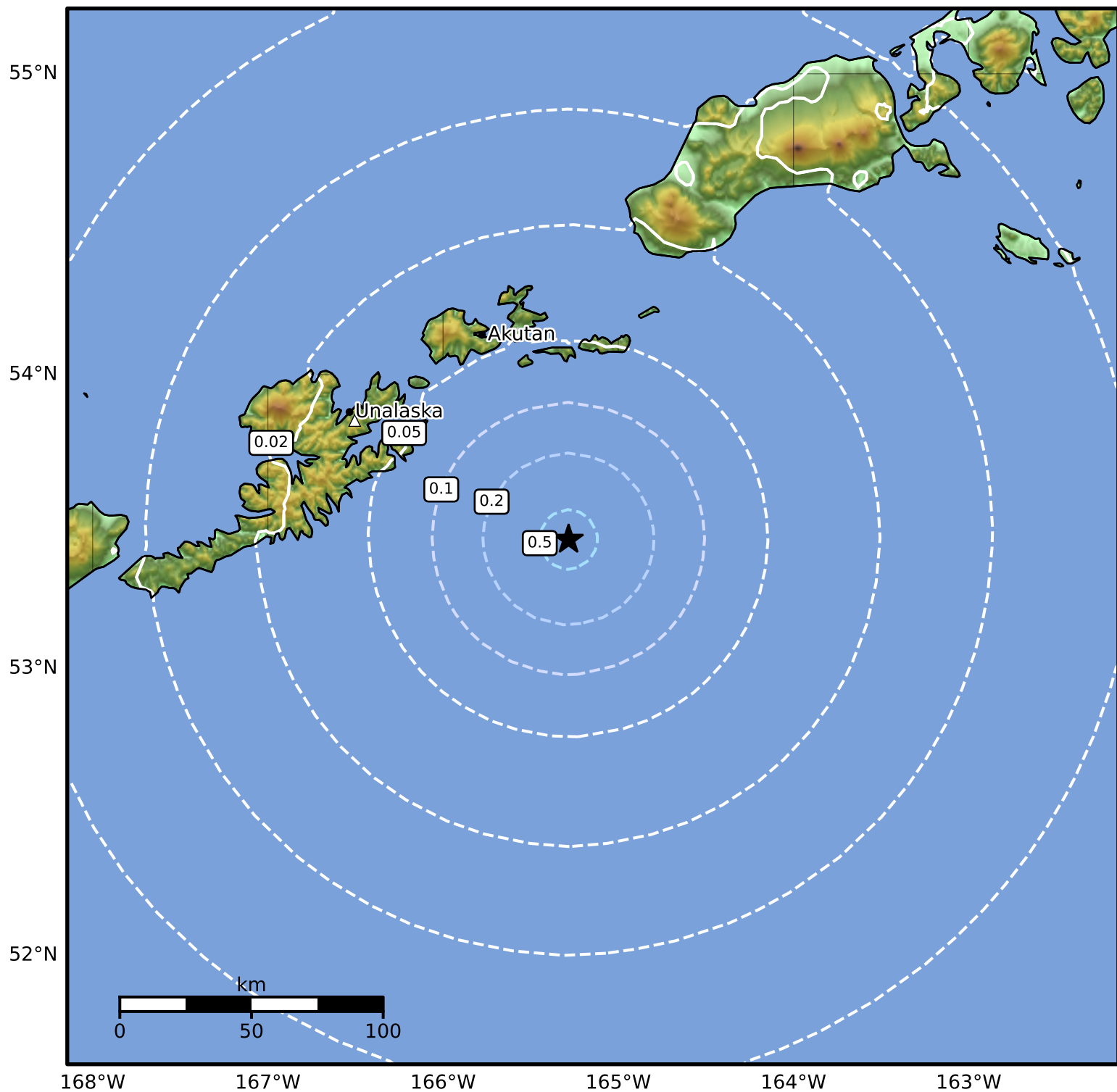


Peak Ground Acceleration Map Alaska Earthquake Center  
ShakeMap: 83 km (52 miles) SSE of Akutan  
Jun 18, 2025 20:50:17 UTC M4.0 N53.44 W165.28 Depth: 25.7km ID:ak0257ru12ux



PGA (%g)	0.1	0.2	0.5	1	2	5	10	20	50	100	200
----------	-----	-----	-----	---	---	---	----	----	----	-----	-----

Scale based on Worden et al. (2012)

△ Seismic Instrument ○ Reported Intensity

Version 2: Processed 2025-06-19T00:11:35Z

★ Epicenter