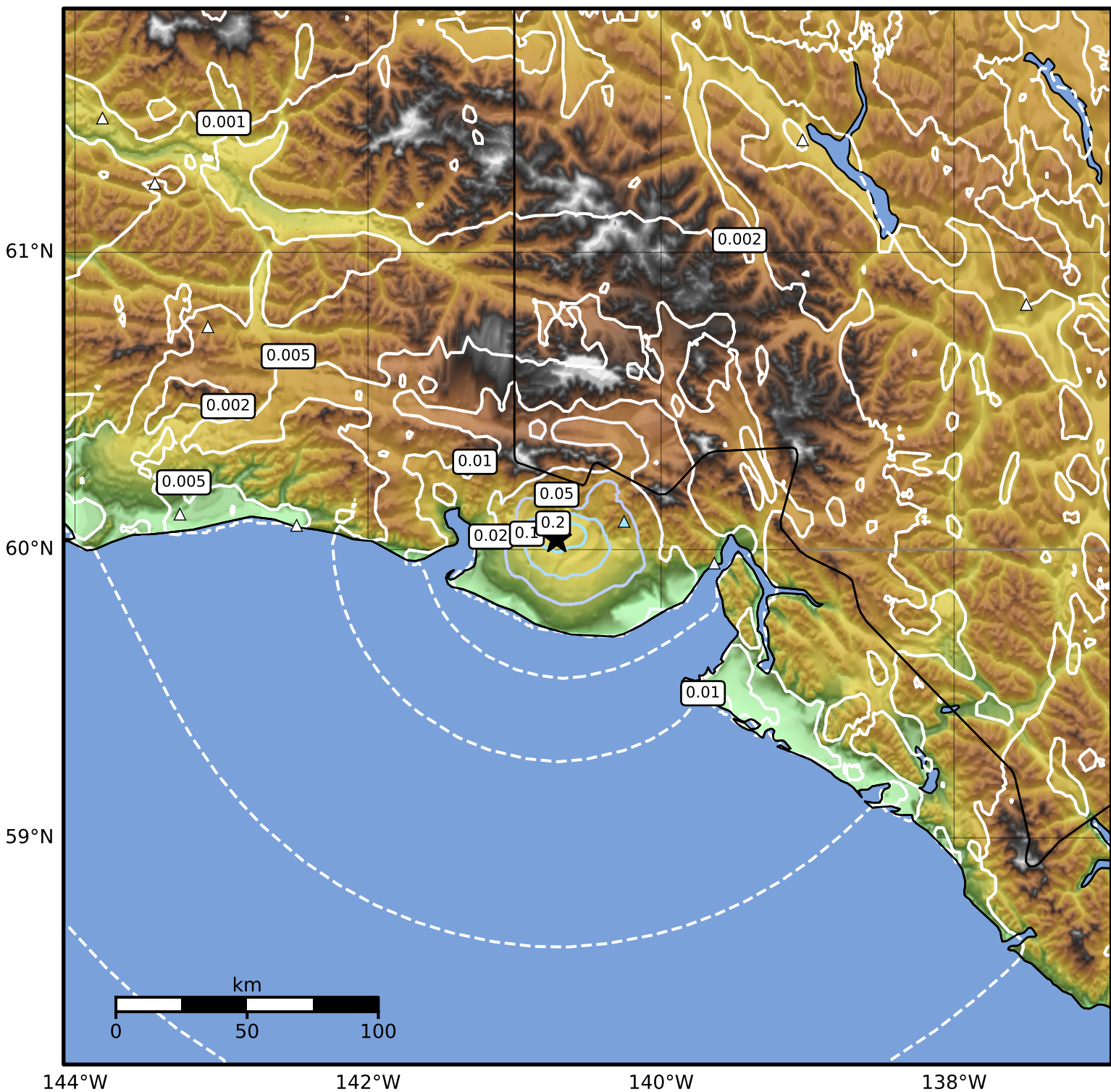


1.0 Second Peak Spectral Acceleration Map Alaska Earthquake Center
 ShakeMap: 54 km (34 miles) E of Icy Bay
 Jul 24, 2025 16:11:56 UTC M3.6 N60.04 W140.71 Depth: 10.1km ID:ak0259fark6t



SA(1.0) (%g)	0.1	0.2	0.5	1	2	5	10	20	50	100	200
--------------	-----	-----	-----	---	---	---	----	----	----	-----	-----

Scale based on Worden et al. (2012)

Version 2: Processed 2025-07-24T19:23:13Z

△ Seismic Instrument ○ Reported Intensity

★ Epicenter