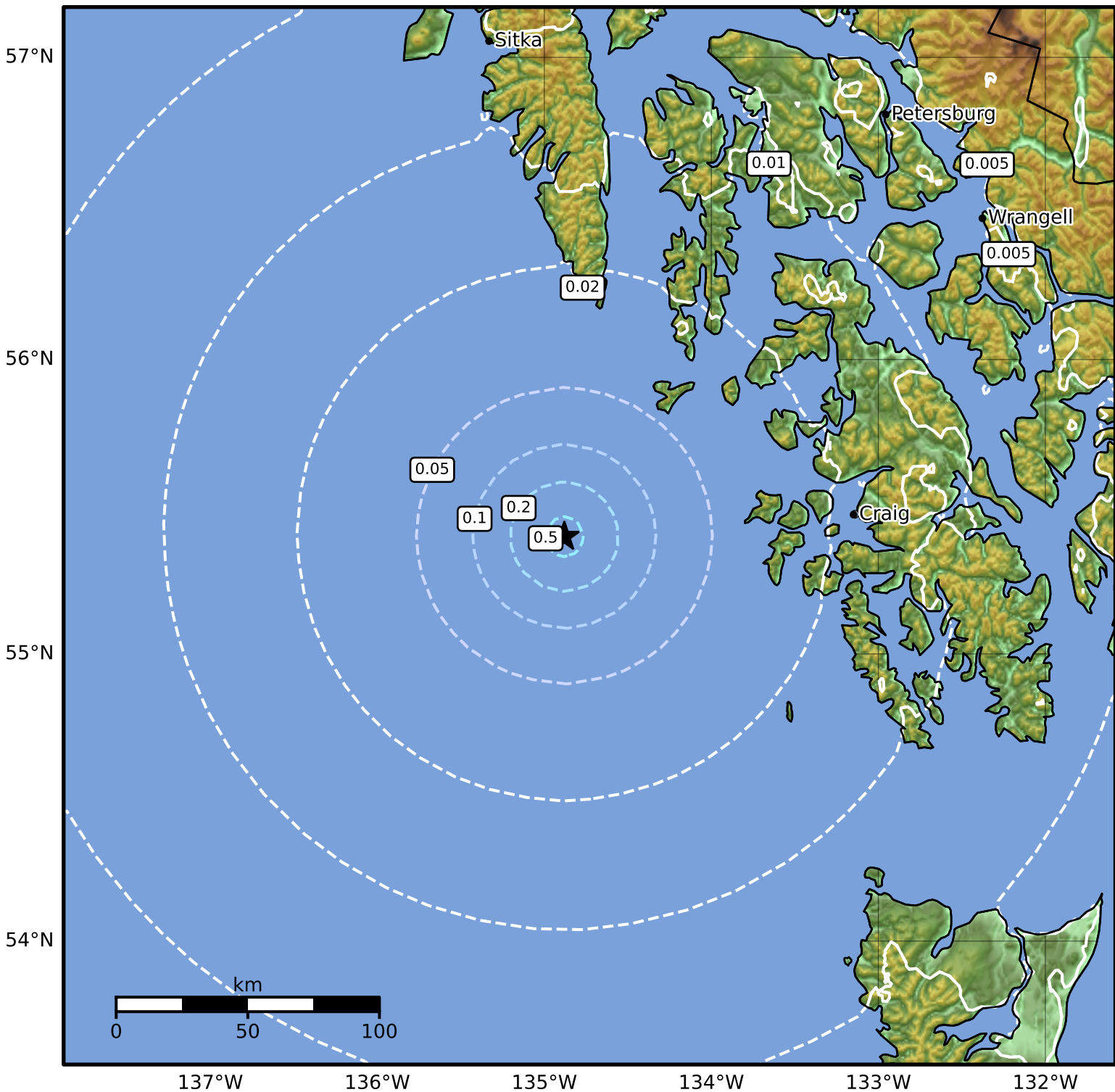


Peak Ground Velocity Map Alaska Earthquake Center  
ShakeMap: 95 km (59 miles) S of Port Alexander  
Jan 15, 2025 01:58:33 UTC M4.0 N55.40 W134.88 Depth: 11.6km ID:ak025ou0514



PGV (cm/s)	0.1	0.2	0.5	1	2	5	10	20	50	100	200
------------	-----	-----	-----	---	---	---	----	----	----	-----	-----

Scale based on Worden et al. (2012)

Version 2: Processed 2025-01-15T03:27:15Z

△ Seismic Instrument ○ Reported Intensity

★ Epicenter